



2021 TECHNICAL CHANGES

Euro5 Compliance and Other Changes



Euro 5 compliance

- New 2-into-1 exhaust system with exhaust valve
- Updated intake manifolds with barbed vacuum port for Exhaust System Management (ESM)
- High compression pistons

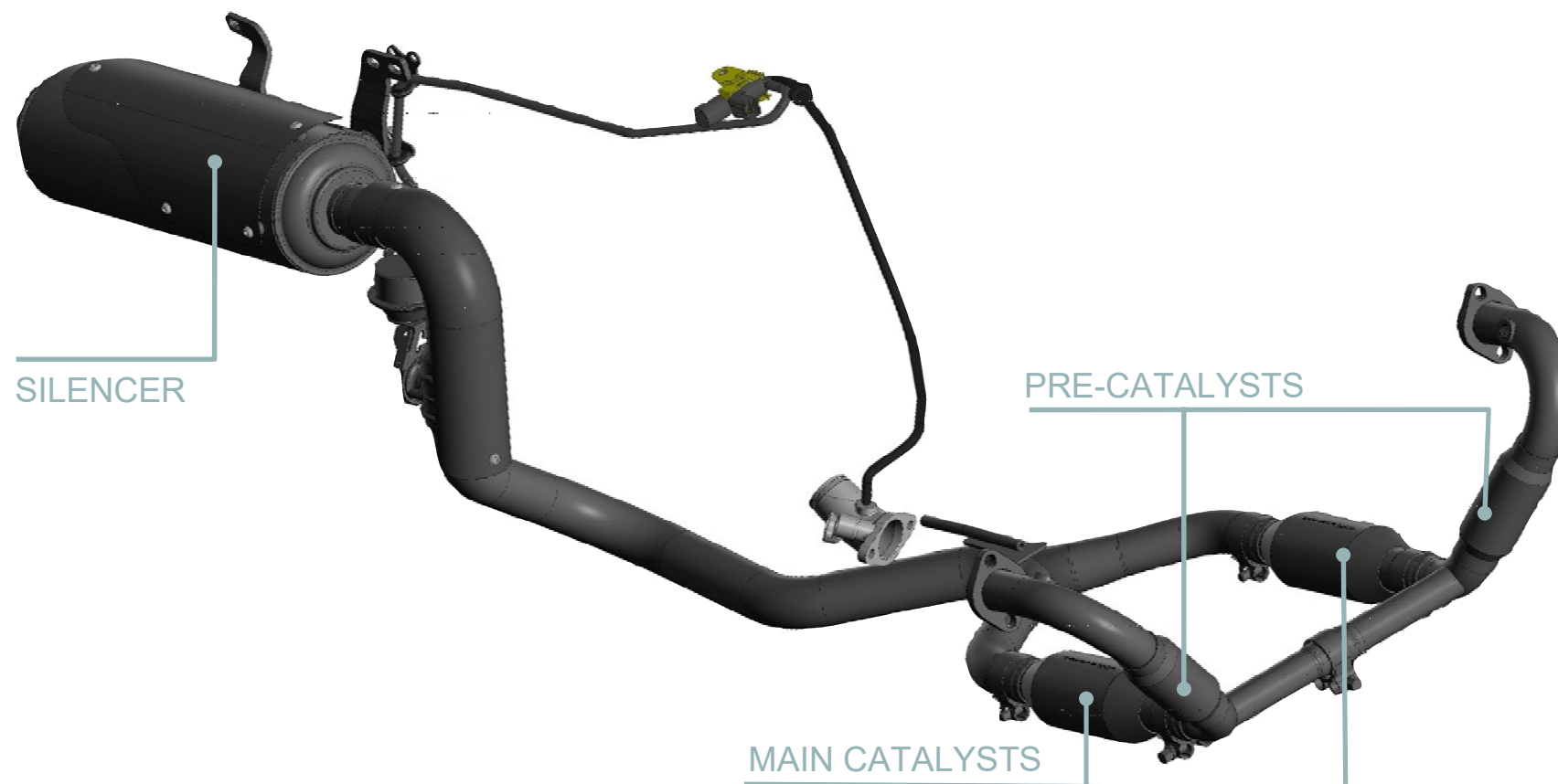
2



Exhaust

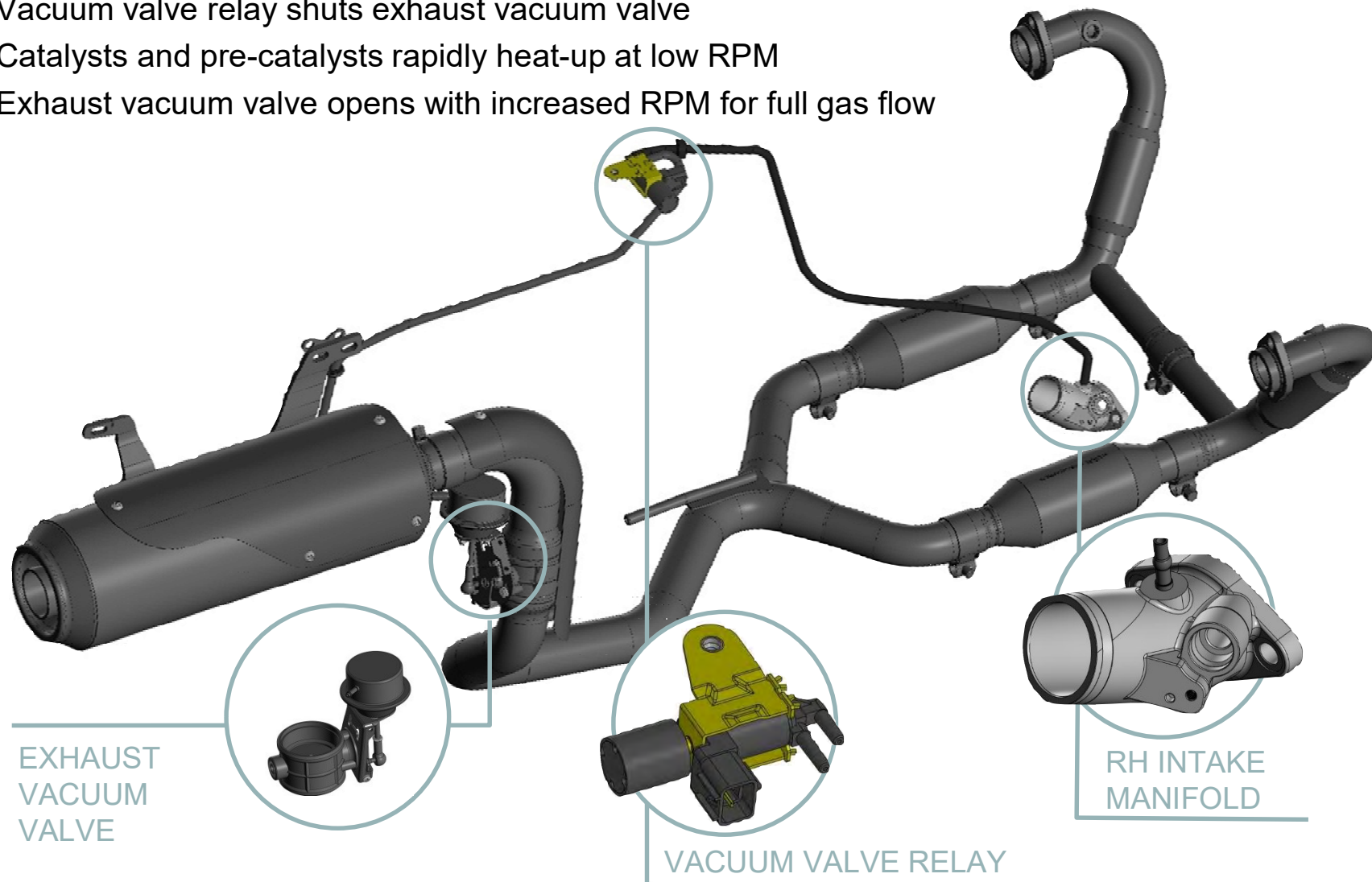
- 2-into-1 system with high mount silencer and exhaust valve
- 2 sets of catalysts with pre-catalysts located in exhaust pipe
- Reduced noise
- Increased ground clearance

3



Confidential

- RH intake manifold port provides vacuum source
- ECU signal actuates vacuum valve relay
- Vacuum valve relay shuts exhaust vacuum valve
- Catalysts and pre-catalysts rapidly heat-up at low RPM
- Exhaust vacuum valve opens with increased RPM for full gas flow

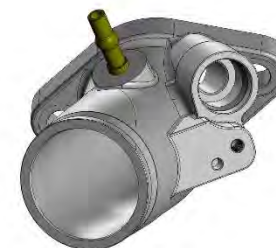




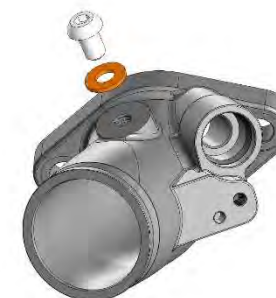


Intake Manifolds

2021



2020



Both LH and RH intake manifolds have been modified to incorporate new barbed fittings. Adapters are no longer needed to attach balancing devices.

Pistons

- New piston design increases compression by 20%
- Gravity cast from NASA388 (aluminum/silica alloy)
- Teflon inlaid skirt
- Hard anodized crown and top ring groove
- Manganese Phosphate coated compression rings
- Top ring face inlaid with high-tech plasma-sprayed Molybdenum
- Piston rings machined to ISO-Metric standards allowing for precisely calibrated end-gap
- Optimized piston ring groove tolerances
- High-precision piston machining allowing one size of cylinder, no longer split into three size classes
- Phosphate-coated piston pin

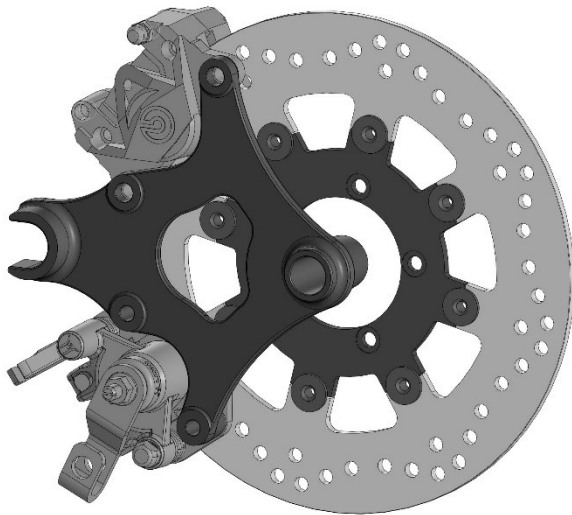


New center stand design

- The new design makes it easier to lift and lower the bike safely.



Running changes summer 2021



All new rear brake system, utilizing a two-piston Brembo caliper and a standalone mechanical parking brake caliper by J.Juan.

The new parking brake caliper provides a long service interval between required adjustments. Parking brake adjustment is also simplified using a new cable system and doesn't require tools.

Newly developed 8-pin floating rear brake rotor by NG Brakes adding to the increased performance of the rear brake.

Running changes summer 2021

- A forged aluminum front swing arm replaces the tubular steel version

